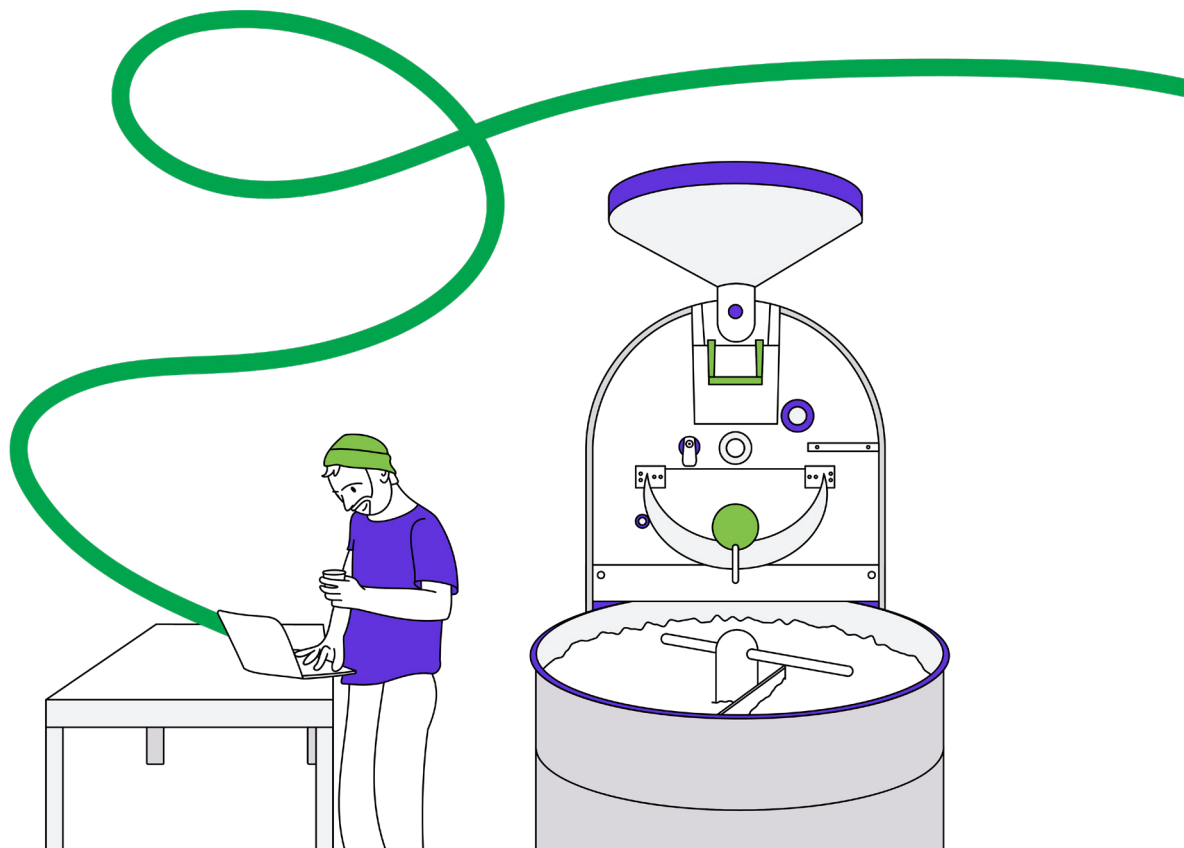


What is Cropster Roast?



Cropster Roast is software designed to improve the management of your coffee roastery. Making it easier to produce great coffee.

OUR SOFTWARE

Improve your production efficiency, consistency, quality, and traceability. Cropster Roast is tailored specifically for coffee roasteries. It assists you with accomplishing tasks ranging from sample and green inventory management, production forecasting and scheduling, capturing roast data, quality assurance, and reporting.

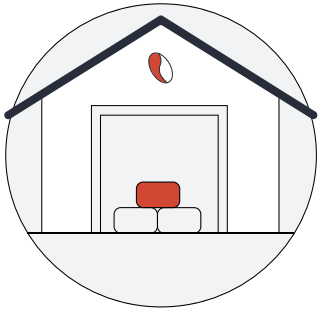
OUR SOLUTION

Cropster Roast is the only solution that can truly help you achieve 100% traceability and improve operational efficiency. Analyze your coffee production across a wide range of metrics to help make timely decisions about profile optimization, purchasing, production planning, quality, and more.

MONTHLY PACKAGES START AT 89€ | \$99

Learn more and schedule your demo at cropster.com/products/roast/

How Does Cropster Roast Help Manage Your Roastery?



SAMPLE & GREEN INVENTORY MANAGEMENT

1. Log and track every sample & green lot, making it easy for your team to handle myriad green coffee samples.
2. Link your cupping data and physical analysis of samples and inventory to help you make wiser purchasing decisions.
3. Easily add a sample to your green inventory, allowing your team to easily trace each coffee through its life cycle.
4. Cropster tracks production trends and predicts future usage as well as run-out dates, no more surprises.
5. Cropster tracks production trends and predicts future usage as well as run-out dates, no more surprises.

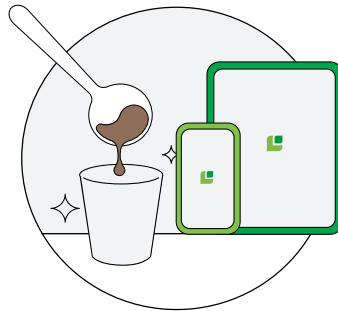
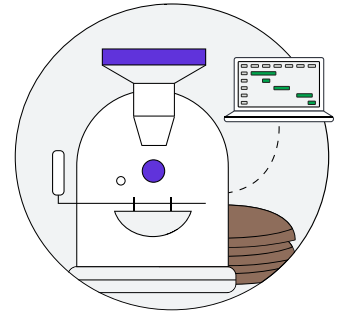


DATA ANALYSIS & REPORTING

1. Built-in reporting on every aspect of roasting, production, inventory, and QC.
2. Review quality trends over time and discover what's working and what needs attention.
3. Reports are easy to export and share with your team and suppliers.

PRODUCTION PLANNING & SCHEDULING

1. Build a production plan from manual orders, including automatic batch calculations, roasting plans and more.
2. Create efficient roast schedules while taking green inventory, blend components, weight loss percentages, and multiple roast machines into account.
3. Seamless integrated production plan into Roasting Intelligence.

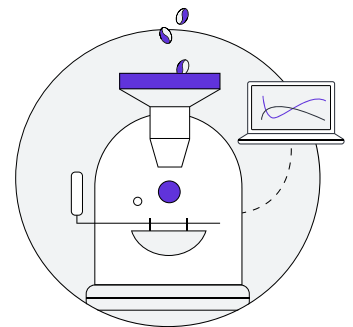


QUALITY ASSURANCE

1. Easily record and monitor every aspect of your green and roasted coffee.
2. Use and create custom cupping sheets for those quick sipping sessions.
3. Link cupping scores to roast profiles, green inventory lots, and green coffee samples.

PROFILING & CONSISTENCY

1. Easy-to-use roasting interface with AI powered roast curve prediction.
2. Advanced RoR algorithms offer three modes to choose from.
3. Connect to commercial roasting machines with automation available for selected machine brands.
4. Share your roast curves with your friends or consultant.
5. Systematic management of single origin / pre-roast blend / post-roast blend profiles makes roast comparison, quality assurance, and data analysis against cupping results easier than ever.



“If you’re not using Cropster, you’re missing the opportunity to use a tool that will help your business in the data collection process, save you a lot of time, energy and allow you to focus on the coffee.”

Thomas Goepel - Tico Coffee Roasters